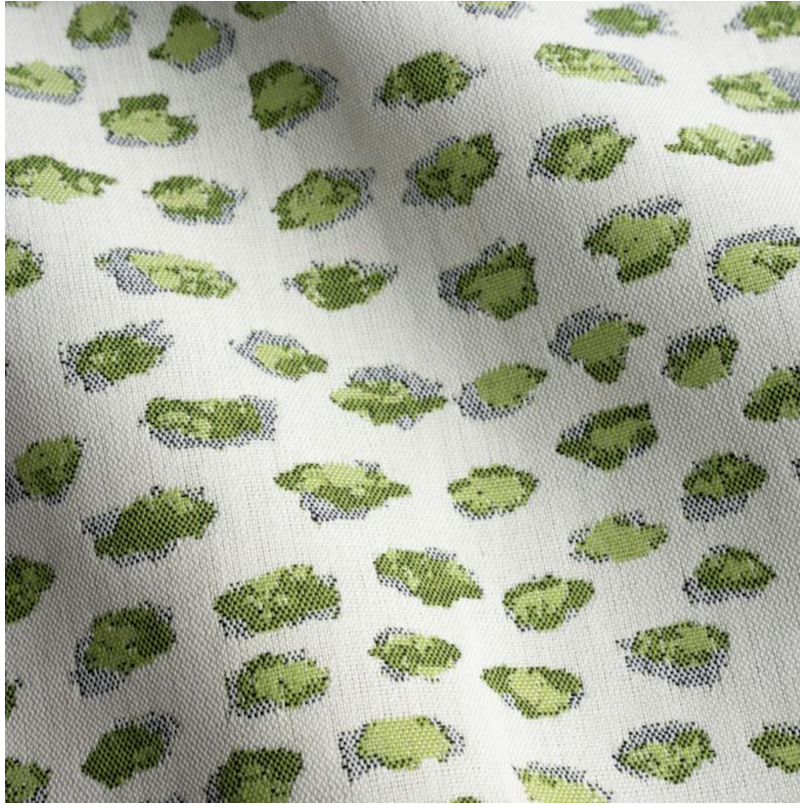


# P E R E N N I A L S

---



## Wasabi Elements

758-305

### DETAILS & SPECS

|                   |                             |
|-------------------|-----------------------------|
| Abrasion          | 27,000 Double Rubs          |
| Brush Pill        | Class 3                     |
| Width             | 54 in (137 cm)              |
| Weight            | 10 oz/sq yd (339 gm/sq m)   |
| Designer          | Porter Teleo                |
| Collection        | 2016 A Spring: Porter Teleo |
| Color Family      | Green                       |
| Color             | Wasabi                      |
| Vertical Repeat   | 14.5 IN (36.8 CM)           |
| Horizontal Repeat | 27 IN (68.6 CM)             |

### DESCRIPTION

Thumb prints? Clouds? Only your imagination knows! Elements is inspired by a painter's palette.

All Perennials 100% solution-dyed acrylic fabrics are backed by an industry-leading no-fade guarantee valid for three years from the date of purchase (with the exceptions of prints, which hold a one-year warranty and Cabana™, which holds a five year warranty).

Perennials' technically superior fabrics are fade resistant, mildew- and mold-resistant, bleach cleanable and easily maintained. Be confident when you select fabrics identified by the Perennials Fiber Mark that you will receive a product that lives up to our name: enduring, constant and fun.